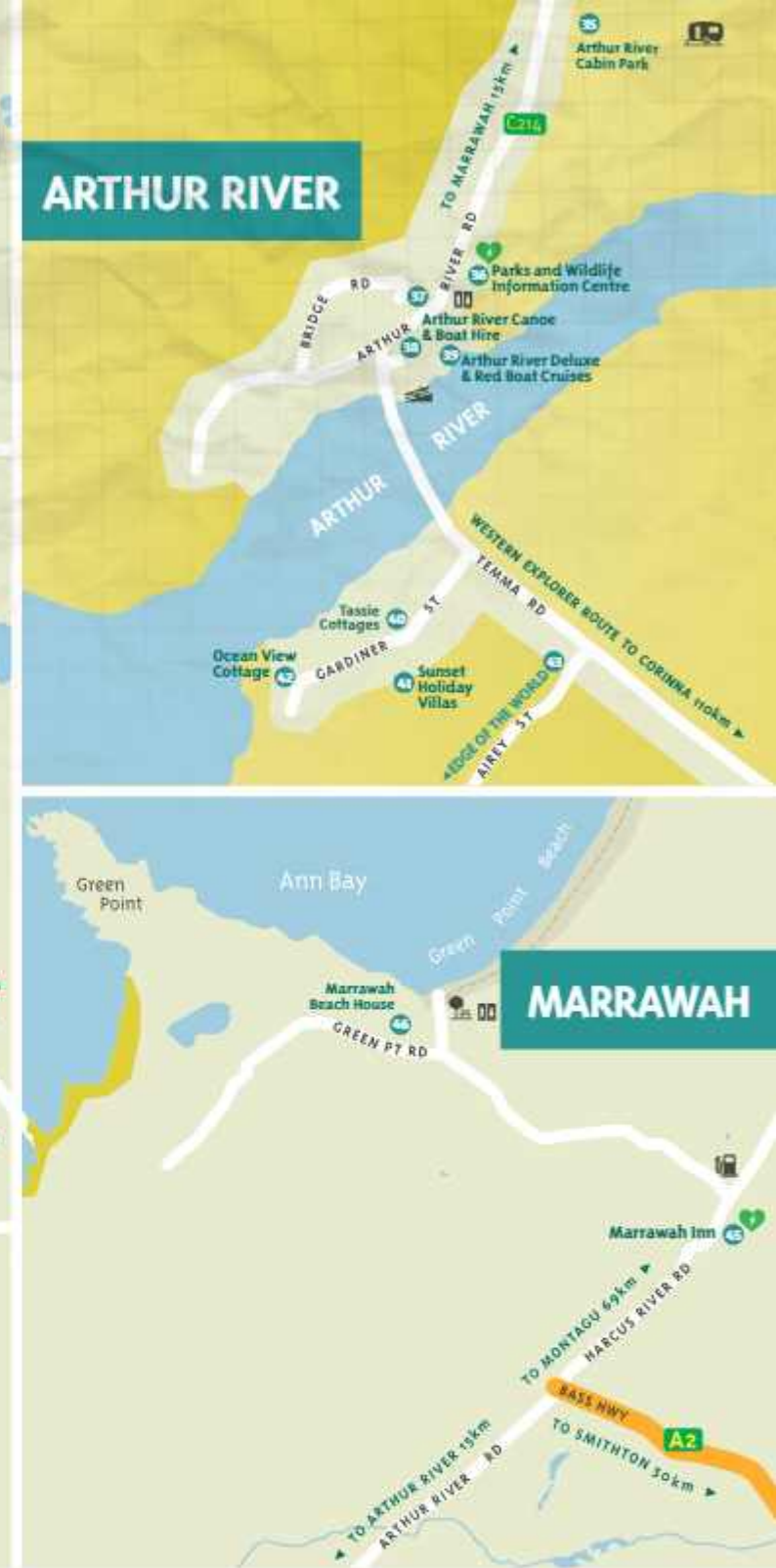


# SMITHTON



# ARTHUR RIVER



## SMITHTON REGION

### Shops/Information/Medical

- The Arty Duck (23)  
0418 359 360
- Smithton Medical Centre (Ochre) (27)  
03 6452 2555
- Laundromat (22)
- Attractions/Tours**
- Brittons Timber (21)  
03 6452 2522
- Circular Head Heritage Museum
- Duck River Pavilion (32)
- Duck River Meadows Robotic Dairy
- North West Tasmania Tours (24)  
03 5977 3867
- Smithton Photo Frame  
Take a photo in the Frame  
email to photos@stanley.com.au  
03 6458 1330
- SWIRL Aquatic Centre (28)  
03 6452 4890

- Tall Timbers Adventure Tours (33)  
03 6452 9000
- Woolnorth Tours (30)  
03 6452 1493

### Accommodation

- Postmaster Inn B&B (24)  
0434 600 420
- River Breeze Caravan & Cabin Park  
03 6452 1181
- Rosebank Cottages S/C  
03 6452 2660
- Sheer Pleasure Accommodation (25)  
0408 163 754
- Tall Timbers Tasmania (33)  
03 6452 9000
- Tassie Cottages (26)  
0418 595 314
- The Bridge Hotel (29)  
03 6452 1389

### Food and Drink

- Hugo's Brew and Chew (B,L)  
03 6452 1059

- Tarkine Fresh Oysters (31) (L)  
03 6452 2262
- Time Out on Emmett (B,L)  
03 6452 3420

### Eating Out

- (Breakfast-B, Lunch-L, Dinner-D)
- Hungry Years Pizza (D)  
03 6452 2373
- Jade Dragon Restaurant (L,D)  
03 6452 1560
- Jenski's Restaurant (B,L)  
0497 068 876
- Tall Timbers (33) (B,L,D)  
03 6452 9000
- The Bridge Hotel (29) (L,D)  
03 6452 1389

## ARTHUR RIVER REGION

### Attractions/Tours

- Arthur River Canoe and Boat Hire (38)  
03 6457 1312

- Arthur River Deluxe & Red Boat Cruises (39)  
0427 885 792
- Arthur River Store (37)  
03 6457 1207
- Edge of the World (43)  
03 6457 1225
- Parks & Wildlife Information Centre (36)  
03 6457 1225
- Tarkine Drive  
03 6458 1330

### Accommodation

- Arthur River Cabin Park (35)  
03 6457 1212
- Ocean View Cottage (42)  
03 6457 1341
- Sunset Holiday Villas (41)  
03 6457 1341
- Tassie Cottages (40)  
0418 595 314

## MARRAWAH REGION

### Food and Drink

- Marrawah Inn (L,D) (45)  
03 6457 1102

## Accommodation

- Marrawah Beach House S/C (46)  
03 6457 1285

## MAWBANNA REGION

### Attractions/Tours

- Blue Hills Honey  
03 6458 8142
- Dip Falls & The Big Tree  
03 6458 1330

## ROCKY CAPE REGION

- Crayfish Creek Caravan Park  
0408 575 336
- Detention River Store & Café  
03 6443 4159
- Rocky Cape Retreat  
0408 575 336







**The NUT CHAIRLIFT STANLEY**

*Why walk when you can ride*

P: 03 6458 1482  
[www.thenutchairlift.com.au](http://www.thenutchairlift.com.au)  
 E: [info@thenutchairlift.com.au](mailto:info@thenutchairlift.com.au)  
 Browns Rd, STANLEY TAS.



**ARTHUR RIVER CRUISES**  
[www.arthurrivercruises.com.au](http://www.arthurrivercruises.com.au)



Deluxe Cruise: Morning Tea & Gourmet lunch  
 Red Boat Cruise: Morning Tea & BBQ Lunch  
 Phone Bookings ONLY: 0427 885 792  
 5 hour cruise: Departs 10am  
 The cruise includes white bottled sea eagle feeding.



**Visit Highfield Historic Site**

Experience Tasmania's north-west pioneering heritage. Take the time to appreciate the architecture and its beautiful gardens all overlooking the township of Stanley.

Open Daily 9.30am - 4.30pm (Closed Christmas Day)  
 143 Greenhills Road, Stanley Phone: 03 6458 1100  
[www.parks.tas.gov.au/highfield](http://www.parks.tas.gov.au/highfield)





**TARKINE ADVENTURE TOURS**

All Tours include Lunch, Snacks & Drinks

Full Day Guided Tours  
 Multiple Award Winning Tour Operator  
 Luxury 4WD Transport  
 Professional Guide  
 A Range Of Tour Options Available

**1800 628 476**


[www.talltimbershotel.com.au](http://www.talltimbershotel.com.au)  
[enquiries@talltimbershotel.com.au](mailto:enquiries@talltimbershotel.com.au)




**La Cántara Artisan Cheeses**

Artisan Venezuelan and European Style Cheese, produced in the heart of Tasmania's North West.

For cheese enquiries  
 Tel. 0400 126 810  
 12 Nelson St, Smithton TAS 7330  
 Open Daily  
 Email: [info@lacantara.com.au](mailto:info@lacantara.com.au)  
 Web: [www.lacantara.com.au](http://www.lacantara.com.au)

**DUCK RIVER MEADOWS ROBOTIC DAIRY**

A Tour of the Duck River Robotic Dairy and Lo Cantara Artisan Cheeses is a unique and fascinating experience. You will be led through the different stages of milking, including the LELY Robotic milking system, history of the regions cheese making which go back to the early 1900s.

**SMITHTON**

**OTM Robotic Dairy**

**Daily Tours**  
 For tour times and bookings: phone 03 6415 4020 or visit our website [duckrivermeadowsdairy.com.au](http://duckrivermeadowsdairy.com.au) or visit us at 12 Nelson Street Smithton.  
 Email: [info@duckrivermeadowsdairy.com.au](mailto:info@duckrivermeadowsdairy.com.au)

**BLUE HILLS HONEY EXPERIENCE**

- Honey Tasting & Sales
- Mead Tasting & Sales
- Multimedia Experience
- Process Viewing & Interpretation Centre
- Gift Shop
- Cafe 0458 000 994

185B Mawbanna Rd, Mawbanna  
 Ph: (03) 6458 8142  
 E: [admin@bluehillshoney.com](mailto:admin@bluehillshoney.com)  
[www.bluehillshoney.com](http://www.bluehillshoney.com)  
 #bluehillshoney @ blue hills honey


Proceed a further 8km to visit Dip Falls and The Big Tree




**CIRCULAR HEAD HERITAGE AND VISITOR INFORMATION CENTRE**

- Local Historical Artefacts
- First Peoples Art & Cultural Collection
- Theatrette
- Collection & Research Facility
- Wi-Fi and Internet
- Café & Restrooms
- Accommodation & Tour Bookings
- National Parks Passes
- Books, Gifts & Souvenirs

12 Nelson Street Smithton  
 Phone 1300 138 229



**PENGUIN VIEWING PLATFORM**

Around dusk from Sept to March little penguins waddle ashore to nest.

The viewing platform allows you to view the little penguins in their own environment up close and undisturbed.

Cullirey's Beach,  
 The Rufus State Reserve - Stanley  
 Ph: 03 6458 1330  
 Stanley Visitor Centre  
 Email: [info@stanleyandtarkine.com.au](mailto:info@stanleyandtarkine.com.au)

**Stanley AND TARKINE**

**STANLEY & SMITHTON VISITOR INFORMATION CENTRE**  
 45 Main Road Stanley | 12 Nelson St Smithton  
 Phone 1300 138 229  
[stanleyandtarkine.com.au](http://stanleyandtarkine.com.au)  
[discoverthetarkine.com.au](http://discoverthetarkine.com.au)

Call us or drop in to the Smithton or Stanley Visitor Information Centre to collect your visitor guides, local maps, book your holiday or talk to a local for some expert advice and warm country hospitality.